

At-Risk Youth Resources Referral Manual



Original By: Lisa Chun Fat (2011)
Revised By: Sheree Klask (2012); Maria Trimble (Summer 2014);
Current Revision by: Sonya Baker and Annalise Ferreira
(Summer 2016)
Chaminade University of Honolulu

Editor: Ronnie Mulford, Ph.D.

Table of Contents

Organized by types of service

EDUCATION	6-11
• Adult Friends for Youth.....	7
• Family Programs Hawaii- eXcel.....	7
• Hawaii National Guard Youth Challenge Academy.....	8
• Hawaii P-20 Partnerships for Education.....	8
• Kamehameha Scholars.....	9
• Variety School of Hawaii.....	10
• HCAP-Youth Services.....	11
 EMPLOYMENT	 12-15
• Goodwill Ola I Ka Hana Program.....	13
• Hawaii Job Corps Center.....	13
• Hawaii Community Action Plan-Youth Services Employment Program.....	14
• Office of Continuing Education and Workforce Development.....	14
• YouthBuild Honolulu.....	15
• Youth Services Center.....	15
 HOTLINES	 16-22
• Ask Aloha Helpline.....	17
• Child & Family Service Hotlines.....	17
• National Center for Missing & Exploited Children Call Center.....	18
• Hawaii Parent Line.....	18
• Health Resources and Services Administration HIV/AIDS Programs.....	18
• Maui Community Resources Numbers.....	19
• National Domestic Violence/Abuse Hotline.....	19
• National Runaway Safeline.....	20
• National Suicide Hotline.....	20
• Poison Help.....	20
• The Trevor Project.....	21
• Coalition for a Drug Free Hawaii.....	21
• Friends of the Missing Child Center-Hawaii.....	21
• Missing Child Center Hawaii.....	22
• Hawaii Youth Services Network.....	22
• Mental Health Association in Hawaii.....	22
• Special Parent Information Network (SPIN).....	22
 COMMUNITY HEALTH CENTERS	 23-27
• Island of Hawaii.....	24
○ Bay Clinic, Inc.....	24

○ Kau Family Health Center.....	24
○ Keaau Family Health Center.....	24
○ Pahoa Family Health Center.....	24
○ Hamakua Health Center.....	24
○ West Hawaii Community Health Center (CHC).....	24
▪ Kealakekua.....	24
▪ Waikoloa.....	24
▪ Dental Van.....	24
○ Hilo Clinic.....	24
○ Kohala Family Health Center.....	24
○ Pahoa Women’s Health Clinic.....	24
• Kauai	
○ Kauai Community Health Center.....	25
• Lanai	
○ Lana’i Community Health Center.....	25
• Maui	
○ Malama I Ke Ola Health Center.....	25
○ Ka Hale A Ke Ola Resource Center.....	25
○ Lahaina Comprehensive Health Center.....	25
○ Hana Community Health Center.....	25
• Molokai	
○ Molokai Community Health Center.....	25
• Oahu	
○ Kalihi-Palama Health Center.....	26
○ Kaaahi Street Clinic.....	26
○ WIC.....	26
○ KPHC Downtown.....	26
○ Behavioral Health, Health Education.....	26
○ Kookaa Kalihi Valley Comprehensive Family Services.....	26
○ KKV Kalihi Valley Homes.....	26
○ KKV Senior Resource Center.....	26
○ KKV Hauiki Hale.....	26
○ KKV Kuhio Park Terrace.....	26
○ Koolauloa Community Health & Wellness Center.....	26
○ Kahuku Hospital Campus.....	26
○ Hauula Clinic.....	26
○ Waianae Coast Comprehensive Health Center.....	27
○ James and Abigail Campbell Clinic.....	27
○ Waipahu Clinic.....	27
○ Waiola Clinic.....	27
○ Kapolei Clinic.....	27
○ Waikiki Health Center.....	27
○ Makahiki Clinic.....	27
○ Care-A-Van.....	27

o Youth Outreach Program (YO).....	27
o Path Clinic.....	27
o Waimanalo Health Center.....	27
FOOD	28-30
• Aloha Harvest.....	29
• Hawaii Foodbank Inc.....	30
HOUSING AND SHELTER	31-40
• Family Life Center.....	32
• Family Programs Hawaii.....	33
• Family Promise of Hawaii.....	34
• Hale Kipa Inc.....	35-36
• Holomua Na Ohana.....	37
• Institute for Human Services.....	38
• Kahale A Ke Ola Homeless Resource Center.....	39
• Maui Youth & Family Services, Inc.	40
SAFETY	41-42
• Hawaii Youth Service Network.....	42
• Kapiolani Child Protection Center.....	42
COMPREHENSIVE PROGRAMS	43-48
• Catholic Charities Hawaii.....	44
• Children’s Alliance of Hawaii.....	45
• Hale opio Kauai.....	46
• Hawaii 4-H.....	47
• Parents and Children Together	48
SUBSTANCE ABUSE	49-59
• Al-ANON/Alateen.....	50
• Big Island Substance Abuse Council.....	50
• Bobby Benson Center.....	51
• City and County of Hawaii Youth Services Center.....	52
• Coalition for a Drug-Free Hawaii.....	52
• Habilitat.....	53
• Hana Youth Center.....	53
• Hawaii Counseling and Education Center.....	54
• Hina Mauka Teen C.A.R.E. Program.....	55
• Kahi Mohala Behavioral Health Center.....	56
• Marimed Foundation.....	57
• Maui Youth & Family Services, Inc.....	58
• YMCA of Honolulu.....	59

POST-SECONDARY AND CAREER SUCCESS.....	60-64
• City and County of Hawaii Youth Services Center.....	61
• Epic Foundation (‘Imi’ike).....	62
• Family Programs Hawaii.....	63
• Hawaii Job Corps Center.....	64
• Kupu Hawaii Youth Conservation Corps.....	64
POSITIVE YOUTH DEVELOPMENT.....	65-80
• A Keiki’s Dream.....	66
• Adult Friends for Youth	67
• Big Brother’s Big Sisters of Hawaii.....	68
• Boy Scouts of America, Aloha Counsel	69
• Boys and Girls Club of Hawaii.....	69
• Captain’s Club.....	70
• EPIC Ohana Inc.....	70
• Family Programs Hawaii-Enhancements.....	71
• Girl Scout Council of Hawaii.....	71
• Hale’opio Kaua’i.....	72
• Harry and Jeanette Weinberg-Kukui Center.....	73
• Hawaii Speed and Quickness.....	73
• IMUA KAKOU.....	74
• Kids Hurt Too.....	74
• Marimed Foundation-Kailana Program.....	75
• Parents and Children Together (PACT) –Intensive Support Services.....	76
• Parents and Children Together (PACT)-Community Teen Program.....	76
• Sounding Joy Music Therapy Inc.....	77
• The Children’s Alliance of Hawaii-Ho’omaka Teen Mentoring.....	78
• The Children’s Alliance of Hawaii-HEART & Soul Program.....	78
• Palama Settlement “Pakolea Program”.....	79
• Winner’s Camp.....	79
• YMCA of Honolulu.....	80

***** The listings in this community referral resource manual are for reference only, and are not intended to be an endorsement, nor offer or replace medical advice.***

EDUCATION





Adult Friends for Youth

3375 Koapaka Street, Suite B-290 Honolulu, HI 96819

Phone Number: (808) 833-8775

Email: afy@afyhawaii.com

Services: Adult Friends for Youth has multiple of services including redirection therapy, school centered programs to help students who are having trouble in school, neighborhood center programs which is a gang therapy program, clinical competency-based alternative education, student anti-bullying and violence convention, and an international 7-aside rugby tournament as an outlet for pent up energy.

Eligibility: At-risk youths ages 11-17 at specific schools from Honolulu to Waianae

Referred by: self, school counselor, or parent (Inform child's social worker), school staff member, or peer

Fee: Free for Youth

Area served: Oahu (Downtown Honolulu to Waianae)

Website: www.afyhawaii.com



Family Programs Hawaii - eXcel

250 Vineyard Street Honolulu, HI 96813

Phone Number: (808) 521-9531 ext. 297

Website: www.FamilyProgramsHawaii.org

Services: This new program targets foster youth interested in attending college or vocational training. eXcel initially concentrates on career and interest exploration, establishing goals, and learning basic independent skills. Support will be provided in the application process and completing financial aid and scholarship applications. Ongoing support will be provided throughout their college or vocational program. They also help with the development of individual transition or educational plan, financial aid and budgeting assistance.

Eligibility: Current and former foster youth on O'ahu considering higher education

Referred by: Child's social worker

Fee: Free

Area served: Oahu

Hawaii National Guard Youth Challenge Academy

P.O. Box 75348 Kapolei, HI 96707
91-1001 Shangrila Street, Kapolei, HI 96707

Phone Number: (808) 685-7139 and (808) 673-7530

Fax Number: (808) 673-7538

Email: admissions.yca.oahu@hawaii.gov

Website: <http://dod.hawaii.gov/yca>

Services: Operates a competency-based high school diploma program offered in a military-based environment during a 22-week residential phase and a second 12-month phase, helping participants enroll in higher education, a technical school program, or obtaining a job.

Eligibility: Youth 16-18 years old, who have not attended high school within the last 30 days, who voluntarily participate, US citizen and Hawaii resident, unemployed, free of drugs, and not involved in the legal system

Referred by: self or child's social worker for children in CWS

Fee: Free

Area served: Statewide

Hawaii P-20 Partnerships for Education

University of Hawaii at Manoa, Sinclair Library, Room 504, 2425 Campus Road, Honolulu, Hawaii 96822

Phone Number: (808) 956-3879

Fax Number: (808) 956-8037

Toll-Free: 1-866-808-4327

Website: www.p20hawaii.org

Services: Hawaii P-20 Partnerships for Education has 3 different types of programs. Hawaii P-3 Initiative helps to promote a cohesive continuum of early learning experiences from birth to age 8. College and Career Readiness has several programs including GEAR UP Hawaii, Core to College, Early College High School Program, My Future Hawaii, College Application and Exploration Season (CAES), Connecting Success, K-12 to Higher Education Alignment, and Community Outreach Partnerships. The last program is Hawaii Data Exchange Partnership which helps guides decisions and policies to improve learner and workforce outcome to benefit the community.

Eligibility: Hawaii residents who are in kindergarten through 12th grade

Kamehameha Scholars

Main Address: 567 S. King Street, Suite 320 Honolulu, HI 96813

Phone: 808-534-8355

Admissions Office: 808-842-8800 or toll free at 800-842-4682 ext. 8800

Fax: 808-534-8278

East Hawai'i Region: 101 Aupuni Street, Ste 102 Hilo, HI 96720

Fax: 808-933-9184

West Hawai'i Region: 75-5591 Palani Road, Ste. 201 Kailua-Kona, HI 96740

Fax: 808-329-0733

Maui Region: 270 A'apueo Parkway Pukalani, HI 96768

Fax: 808-572-1076

Kaua'i Region: 3170 A Jerves St. Lihue, HI 96766

Fax: 808-245-2848

Website: <https://apps.ksbe.edu/kscholars/>

Services: The program is a supplementary educational enrichment program with a focus on college and career guidance. Students will discover and assess their skills, interests, and values and explore matching post-high institutions and career options to develop plans for their future. Recently, Kamehameha Scholars has also begun offering counseling and guidance services to first-year college students. Kamehameha Scholars is a year-round program, beginning with an introduction to the program for new scholars during the summer prior to their first year in the program. Workshops and other guidance activities are held during non-school times—primarily weekends, evenings, and school intersessions—at various times during the school year.

Eligibility: Students enrolling in high school (grades 9-12) in the upcoming school year, who reside on the islands of Hawai'i, O'ahu, Kaua'i, or Maui and do NOT currently attend one of Kamehameha Schools' three campuses, are eligible to apply for our community program. Scholars are expected to attend workshops, complete assignments, and maintain a minimum GPA of 2.0 at their schools in order to remain enrolled in the program.

Referred by: Self, Parents, or Guardian

Fee: None

Areas Served: Statewide



710 Palekaua Street Honolulu, HI 96816

Phone Number: (808) 732-2835

Fax Number: (808) 732-4334

Email: info@variety-school.org

Website: www.variety-school.org

Services: A school that educates children with learning differences through the use of an individualized multidisciplinary approach so that each child can achieve his or her own maximum potential. Variety School of Hawaii provides day school programs, high school programs, after school programs, summer school AM and PM programs, summer school full day programs, and high school summer programs.

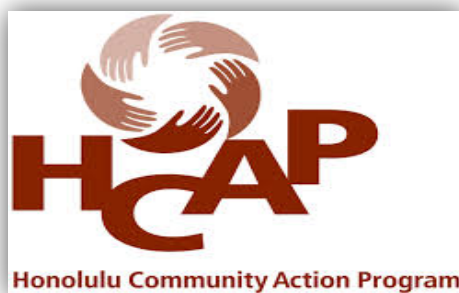
Eligibility: Children ages 5-18 with learning disabilities, attention deficit disorder, and/or high-functioning autism.

Referred by: Self, Social Worker, Parents, or Guardian

Fee: Call for current tuition costs. Financial aid available.

Area served: Oahu





HCAP - Youth Services

33 South King Street, Suite 300 Honolulu, Hawaii 96813

Phone Number: (808) 591-1766

Email: youthservices@hcapweb.org or krystali@hcapweb.org

Fax Number: (808) 591-1768

Website: www.hcapweb.org/youth-services

Services: The Youth Services Education Program helps youth 14 to 24 years of age complete their Hawaii Adult Community School Diploma using the Competency Based Community School Diploma Program with tutoring. Students learn health, government and law, consumer economics, community resources and occupational knowledge. Youth are able to display functionally competent outcomes by being accepted to post-secondary educational training, employment, obtaining or possessing a marketable skill, or demonstrating at home or life management skills.

The employment program provides leadership skill training, occupational training, cultural awareness and on-going individual and group counseling.

Eligibility: Youth, ages 14-21 years old; minimum 7th grade math and reading level; have 1 or more of the following: falls in the “lower living standard income level,” homeless, runaway, or foster child, pregnant or parenting, offender, school dropout, individual with a disability, deficient in basic skills, an individual who requires additional assistance to complete an educational program or to secure and hold employment.

Referred by: self, child's social worker (for children in CWS)

Fee: Free

Area served: Oahu

EMPLOYMENT



Goodwill Ola I Ka Hana Program

1072 Young Street, Honolulu, HI 96814

2140 Lauwiliwili Street, Kapolei, HI 96707

500 Kalanianaʻole Avenue, Suite 3, Hilo, HI 96720

74-5599 Luhia Street, F-4, Luhia Center II, Kailua-Kona, HI 96740

Phone Number: (808) 792-8587 (Honolulu), (808) 792-8591 (Kapolei), (808) 443-5865 (Hilo), and (808) 443-5852 Kailua-Kona

Services: Goodwill's Ola I Ka Hana program works with youth on their educational and work goals. Services include GED or C-based diploma preparation, vocational exploration, off-site educational activities, leadership development, mentorship, and job placement assistance.

Eligibility: Oahu – 21 years and under. Hawaii – 24 years and under.

Fee: Free

Areas served: Oahu and Hawai'i

Website: www.higoodwill.org/goodwill-programs/community-services/youth-services/

Hawaii Job Corps Center

41-467 Hihimanu Street, Waimanalo, HI 96795

Phone Number: (808) 259-6001

Fax Number: (808) 259-7907

Website: www.hawaii.jobcorps.gov

Services: Job Corps is an educational and career technical school that helps young people improve the quality of their lives through career technical and academic training. They offer a GED/high school program and career training in the following, automotive, business technology, culinary arts, facilities maintenance, health occupations/certified nursing assistant, landscaping, medical office support, and painting.

Eligibility: Young people ages 16 through 24 who live on Oahu

Fee: Free

Area Served: Oahu

**Honolulu Community Action Program - Youth Services Employment
Program**

33 South King Street, Suite 300, Honolulu, HI 96813

Phone Number: (808) 591-1766

Fax Number: (808) 591-1768

Email: Krystali@hcapweb.org

Website: www.hcapweb.org/youthservices



Services: This program provides job training and placement for out-of-school and in-school youth, 16 to 22 years of age and is an optimum follow-up to our Youth Services Education Program. It also offers competency-based work readiness skills prior to employment. The program also provides leadership skills training, occupational training, cultural awareness, and on-going individual and group counseling.

Eligibility: Youth, ages 16-24 years old, low-income (foster youth qualify) Referred by: self (Child's social worker for children in CWS)

Fee: Free

Area served: Oahu

Office of Continuing Education and Workforce Development

96-045 Ala'ike Room CE-101, Pearl City, HI 96782

Phone Number: (808) 455-0477

Fax Number: (808) 453-6730

Email: ocewd@hawaii.edu

Website: www.ocewd.org

Service: Career training.

Eligibility: call to ask

YouthBuild Honolulu

1505 Dillingham Boulevard, Suite 110, Honolulu, HI 96817

Phone Number: (808) 768-5888

Fax Number: (808) 832-7817

Email: dmanini@honolulu.gov

Website: www.youthbuildhonolulu.org

Services: YouthBuild Honolulu provides education, training, and related services such as alternative high school diploma program, tutoring, pre-apprenticeship construction training leading to an industry recognized credential, hands-on construction skills training, leadership development, employment preparation, career exploration and planning and more.

Eligibility: Must be ages 17 to 24, and have one of the following: be a school dropout, be an individual who has dropped out of high school and re-enrolled in an alternative school, member of a low-income family, youth in foster care, youth or adult offender, a child of an incarcerated parent, or a migrant youth.

Fee: There is no signs of payment on the website

Area Served: Oahu

Youth Services Center

1505 Dillingham Boulevard, Suite 110 and 206, Honolulu, HI 96817

Phone Number: (808) 768-5777

Website: www.honolulu.gov/dcs/youth-services.html

Services: Youth Services Center provides Hawaii Adult Community School Diploma and vocational training, job readiness training and placement services, and supportive services which includes intensive case management, anger management, substance abuse counseling, leadership development, and other needed services. There are various types of youth center programs including Creating Employment Opportunities (CEO) program, Juvenile Justice Center, State Preventive Framework, and Youth Operator Program.

Eligibility: Young adults previously involved in the Juvenile Justice Center ages 18-21 for the CEO program, ages 14-17 who are status offenders and first time law violators for the Juvenile Justice Center, ages 12-17 using tobacco, alcohol, and drugs, and for the Youth Operator Program age is not specified.

HOTLINES



Ask Aloha Helpline

Phone Number: 2-1-1

Services: 2-1-1 is a confidential, toll-free help hotline for anyone in Hawaii in need of help. With 2-1-1, you can easily find information and referrals on everything from crisis intervention and counseling to job training, educational programs and child care.



Eligibility: Simply dial 2-1-1 Monday – Friday from 7 a.m. – 5 p.m. The service is confidential, toll-free, statewide, and multilingual assistance is available.

Website: <https://www.auw.org/get-help/>

Child & Family Service Hotlines

Phone Numbers: Crisis Mobile Outreach for all islands 1-800-753-6879

Abuse hotline for Oahu (808) 841-0822

Abuse hotline for East Hawaii Island (808) 959-8864

Abuse hotline for West Hawaii Island (808) 322-7233

Sexual Assault Center for Maui (808) 873-8624

Parent Line for Oahu (808) 526-1222

Parent Line for Neighbor Islands 1-800-816-1222

Website: www.childandfamilyservice.org

Service: Crisis Mobile Outreach services provide support, consultation, assessment and referrals to all youth whose immediate health and safety may be in jeopardy due to a mental health issue. Crisis Mobile Outreach services are available to conduct a face-to-face assessment of the crisis situation and arrange appropriate course of action. The number above are available for the services they are for.

Eligibility: All youth experiencing a crisis are eligible for services. Child and Family Service Hotlines are available 24/7

Fees: There are no fees for this service.



National Center for Missing & Exploited Children Call Center

Phone Number: 1-800-843-5678

Website: <http://www.missingkids.com/hotline>

Service: 24 hours 7 days a week hotline for reporting a missing child or suspected child sexual exploitation.

Hawaii Parent Line

Phone Numbers: *Oahu (808) 526-1222; Neighbor Islands: 1-800-816-1222*

Website: <http://www.theparentline.org/>

Service: Free statewide confidential telephone line which offers support and information to parents and other caregivers. The phone line staff will help you with problem-solving parenting challenges and child and adolescent behavior and development issues. Community resources information and parenting handouts are available.



Health Resources and Services Administration HIV/AIDS Programs

Phone Number: 1 (800) 232-4636

Website: <http://hab.hrsa.gov/>

Service: This is a STD/AIDS hotline that can help you get help to determine what services are you eligible for and can help you locate where you can receive these services.

Maui Community Resource Numbers

Phone Number: Adult Children of Alcoholics (808) 242-9733

Alcoholics Anonymous (808) 244-9673

Castle Alcohol & Addiction (808) 242-9733

Child & Family Services (808) 873-8624

Domestic Violence Help Line (808) 579-9581

Family Visitation Center (808) 244-6240

Family Peace Center (808) 244-2330

Friends of Children's Advocacy Center of Maui (808) 244-1046

Handsome Bugga (Drug-Free Youth Counseling) (808) 575-9264

Maui Youth & Family Services

Emergency Shelter Hotline (808) 579-8406

Family Counseling (808) 579-8414

Sex Abuse Intervention 24 hour Crisis Hotline (808)873-8624

TEEN LINE (808) 243-8336

Website: www.mauimapp.com/community/resources

Service: Provides support, consultation, and referral services. Also provides information and/or guidance to manage a crisis and situations listed above.

Fees: Free

National Domestic Violence/Abuse Hotline

Phone Number: 1-800-799-SAFE (7233)

Website: <http://www.thehotline.org/>

Service: 24-hour national service for anyone who is experiencing domestic violence, seeking resources or information, or questioning unhealthy aspects of their relationship.

National Runaway Safeline

Phone Number: 1-800-RUNAWAY (1-800-786-2929)

Website: <http://www.1800runaway.org/>

Service: 24-hour national service to report runaway cases.



National Suicide Prevention Lifeline

Phone Number: 1-800-273-TALK (8255)

Website: <http://www.suicidepreventionlifeline.org/>

Service: 24-hour national service to help those contemplating or victims of suicide.



Poison Help

Phone Number: 1-800-222-1222

Website: <http://poisonhelp.hrsa.gov/the-poison-help-line/>

Service: 24-hour line to help with information in possible poisonous situations (chemicals, medicine, or household items, etc.) connects you to your local poison center.





The Trevor Project

Phone Number: 1-866-4-U-TREVOR (1-866-488-7386)

Website: www.thetrevorproject.org

Service: Crisis and suicide prevention helpline for lesbian, gay, bisexual, transgender and questioning youth. Confidential service that offers hope and someone to talk to, 24/7.



Coalition for a Drug Free Hawaii

Phone Numbers:

Oahu: (808) 832-3100

Neighbor Islands: 1-800-753-6879

Website: <http://www.drugfreehawaii.org/>

Service: The crisis line is a 24 hours a day, 7 days a week service to help individuals or family members durinf mental health crises including suicide prevention.

Friends of the Missing Child Center-Hawaii

Phone Number: 808-753-9797

Website: <http://www.missingkidshawaii.org>

Service: Friends of the Missing Child Center-Hawaii is here to protect Hawaii's youth for abduction and exploitation.



Missing Child Center Hawaii

Phone Numbers: Oahu (808) 586-1449

Hawaii (808) 974-4000 ext. 6-1449

Kaui (808) 274-3141 ext. 6-1449

Maui (808) 984-2400 ext. 6-1449

Molokai/ Lani 1-800-468-4644 ext. 6-1449

Services: Locates and recovers missing children, reunites missing children with their families and prevents child abduction in Hawaii.

Website: ag.hawaii.gov/cpja/mcch/

Hawaii Youth Services Network

Phone Number: (808) 489-9549

Email: jclark@hysn.org

Service: HYSN increases the capacity of youth-serving organizations and individuals through training and technical assistance, builds partnerships and collaborations among organizations, and workers to ensure that policies, programs, and resources are in place to meet the needs of youth and their families.

Website: www.hysn.org

Mental Health Association in Hawaii

Phone Number: (808) 832-3100 Oahu

1-800-753-6879 Neighbor Islands

Website: mentalhealthhawaii.org

Service: Voluntary citizen's organization that promotes mental health and the prevention of mental illnesses through education and advocacy and works to improve the care, treatment, and participation of individuals with mental illnesses.

Special Parent Information Network (SPIN)

Phone: Oahu 808-586-8126

Website: <http://spinhawaii.org/>

Service: Parent-to-parent organization in Hawaii that provides information, support and referral to parents of children and young adults with disabilities and the professionals who serve them.

COMMUNITY HEALTH CENTERS



www.shutterstock.com · 5936692

Island of Hawaii

Kau Family Health Center
95-5583 Mamalahoa Highway
Na'alehu, HI 96772
Phone: (808) 929-7311

Keaau Family Health Center
16-192 Pilimua Street
Keaau, HI 96749
Phone: (808) 930-0400

Pahoa Family Health Center
15-2868 Pahoa Village Road,
Bldg-C Suite-A
Pahoa, HI 96778
Phone: (808) 965-9711

Hilo Clinic
1178 Kino'ole St.
Hilo, HI 96720
808-969-1427
www.bayclinic.org

Hamakua Health Center
45-549 Plumeria Street
Honoka'a, HI 96727
Phone: (808) 775-7204
www.hamakua-health.org

West Hawaii Community Health Center – Waikoloa
Waikoloa Highlands Shopping Center
68-1845 Waikoloa Road, Suite 207
808-769-5160

Bay Clinic Family Health Center
15-2866 Pāhoa Village Road,
Bldg F, Suite-A
Pahoa, HI 96778
808-965-3038

West Hawaii Community Health Center (CHC)
75-5751 Kuakini Hwy, Suite 104
Kailua-Kona, HI 96740
Phone: (808) 326-5629
www.westhawaiihc.org

West Hawaii Community Health Center – Dental Van
Stationed at Hope Services
74-5593 Pawai Place
Kailua-Kona, HI 96740
808-329-0465

Kohala Family Health Center
53-3925 Akoni Pule Highway
Kapa'au, HI 96755
808-889-6236

West Hawaii Community Health Center – Kealakekua
Selwyn Plaza
81-6627 Mamaloahoa Hwy
Kealakekua, HI 96750
(808) 323-8005
Adult Medical, Suite B-1
Keiki Medical, Suite B-3
Keiki Dental, Suite 106 (Fl 2)

Pāhoa Women's Health Clinic
73 Puuhonu Place, Suite 204
Hilo, HI 96720
808-934-3280

Kauai

Kauai Community Health Center
4643 B Waimea Canyon Dr.
Waimea, HI 96796
808-240-0100

Kauai Community Health Center
4800-D Kawaihau Rd.
Kapaa, HI 96746
808-240-0100

Lanai

Lana‘i Community Health Center
478 Lauhala Place
Lana‘i City, HI 96763
808-565-6919

Maui

Malama Ike Ola Health Center
(Community Clinic of Maui)
1881 Nani St.
Wailuku, HI 96793
808-871-7772

Lahaina Comp. Health Center
12 Ipu Aumakua
Lahaina, HI 96761
808-667-7598

Ka Hale a Ke Ola Resource Center
670-A Wai‘ale Dr.
Wailuku, HI 96793

Hana Health
4590 Hana Highway
Hana, HI 96713
808-248-8294

Molokai

Molokai Community Health Center
28 Kamoi Street, Suite 600
Kaunakakai, HI 96748
Phone: (808) 553-5038

Oahu

Kalihi-Palama Health Center

Main Clinic

915 North King Street
Honolulu, HI 96817
Phone: (808) 848-1438
Website: www.kphc.org

WIC

888 North King Street, Suites 4
& 5
Honolulu, HI 96817
Phone: (808) 841-0011

Behavioral Health, Health Education

952 North King Street
Honolulu, HI 96817
(808) 841-7981

KPHC Downtown

89 South King Street
Honolulu, HI 96813
(808) 792-5560

Kaaahi Street Clinic (Women & Children's Shelter)

546 Kaaahi Street
Honolulu, HI 96817
Phone: (808) 853-1700

Kokua Kalihi Valley Comprehensive Family Services

Main Clinic

2239 North School Street
Honolulu, HI 96819
Phone: (808) 791-9400
Website:
www.kokuakalihivalley.org

KKV Senior Resource Center

1846 Gulick Avenue
Honolulu, HI 96819
(808) 848-0977

KKV Hauiki Hale

1574 Meyers Street
Honolulu, HI 96819

KKV Kalihi Valley Homes

2243 Kalaunu Street
Honolulu, HI 96819

KKV Kuhio Park Terrace

1475 Linapuni Street, #A-175
Honolulu, HI 96819

Koolauloa Community Health & Wellness Center

Kahuku Hospital Campus

56-119 Pualalea St.
Kahuku, HI 96731
Phone: (808) 293-9216

Hauula Clinic

54-316 Kamehameha Hwy,
Unit #7
Hauula, HI, 96717

Waianae Coast Comprehensive Health Center

Main Campus

86-260 Farrington Highway
Wai'anae, HI 96792
Phone: (808) 696-7081
Website: www.wcchc.com

James and Abigail Campbell Clinic

87-2070 Farrington Highway
Waianae, HI 96792
Phone: (808) 668-2311

Waipahu Clinic (Filipino Community Center)

94-428 Mokuola Street,
#108B
Waipahu, HI 96797
Phone: (808) 676-7233

Wai'ola Clinic

86-120 Farrington Highway
Waianae, HI 96792
Phone: (808) 697-3133

Kapolei Clinic

91-525 Farrington Highway,
Suite 102
Kapolei, HI 96707
Phone: (808) 674-9352

Waikiki Health Center

Main Clinic

277 Ohua Avenue
Honolulu, HI 96815
Phone: (808) 992-4787
Website: www.waikikihc.org

Makahiki Clinic

935 Makahiki Way
Honolulu, HI 96826
Phone: (808) 922-4787

Care-A-Van Homeless Drop- In Center and Clinic

3020 Waialae Ave.
Honolulu, HI 96816
Phone: (808) 992-4790

Youth Outreach/ Teen Clinic - Waikiki

415 Keoniana St.
Honolulu, HI 96815
Phone: (808) 942-5858

Path Clinic - Kaimuki

845 22nd Ave,
Honolulu, HI 96816
Phone: (808) 791-9390

Waimanalo Health Center

41-1374 Kalaniana'ole Highway
Waimanalo, HI 96795
Phone: (808) 259-7948
Website: www.waimanalohc.org



FOOD



Aloha Harvest

3599 Waialae Avenue #23, Honolulu, HI 96816

Phone Number: (808) 537-6945

Fax Number: (808) 537-6970

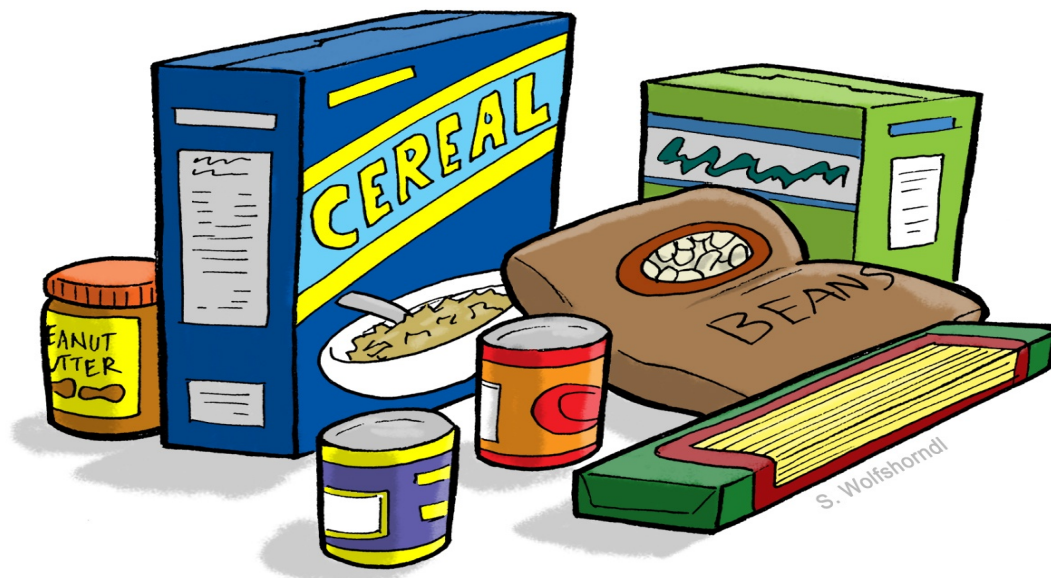
Email: info@alohaharvest.org

Website: <http://www.alohaharvest.org>

Service description: Aloha Harvest is a non-profit organization that rescues quality, donated food and delivers it “free of charge” to social service agencies feeding the hungry in Hawaii.

Service area: Oahu.

Fees: Free.



Hawaii Foodbank Inc.

2611 Kilihau Street Honolulu, HI 96819



Phone number: (808) 836-3600

Fax number: (808) 836-2272

Website: <http://www.hawaiifoodbank.org>

Hours: Mon. - Fri.: 8:00 a.m. - 4:00 p.m.

Service description:

DOES NOT OFFER DIRECT DISTRIBUTION OF FOOD TO THE PUBLIC

Receives surplus and salvage food from companies and distributes it to non-profit agencies that are pantries, shelters, or does off-site feeding programs. Make food available to non-profit member agencies that help feed the needy, children, elderly, abused, ill, and disabled.

Membership applications open to all publicly supported 501(c) 3 designated organizations. Does not provide food to individuals. Accepts volunteers in the following areas: sorting food, clerical, stuffing/folding envelopes, doing research work, making props/favors, making orange ribbons, or cleaning. Volunteers also accepted for "Check-Out Hunger" and "Victoria Ward Centers City Lights Trolley Tours" programs and the annual food drive and golf tournament.

Service area: Oahu.

Eligibility: Publicly supported 501(c)(3) agencies providing meals, shelters, feeding programs, and food pantries that serve the needy, children, elderly, abused, ill and disabled.

Target: Membership applications open to all publicly supported 501(c) 3 designated organizations. Non-profit agencies that are pantries, shelters, or has feeding programs. Non-profit member agencies that serve the needy, children, elderly, abused, ill, and disabled.

Neighbor Islands: Hawaii FoodBank Kauai Branch: 4241-A Hanahao Place, Lihue, HI 96766

Phone Number: (808) 482-2224 Fax Number: (808) 482-2225

Maui Foodbank: 760 Kolu Street, Wailuku, HI 96793

Phone Number: (808) 243-9500 Fax Number: (808) 243-9595

The Food Basket Hawaii Island's Food Bank: 40 Holomua St., Hilo, HI 96720

Phone Number: (808)933-6030 Fax Number: 934-0701

HOUSING AND SHELTERS





95 Kane St. Kahului, HI 96732

Phone Number: 808-877-0880

Website: <http://flcmaui.org/>

Services:

Housing assistance: Housing placement and rental assistance. Shelter plus care – a federally funded program designed to assist individuals who are homeless and have a disability find and maintain permanent housing.

Homeless programs: Outreach- Outreach workers make viable contact with homeless individuals and families to connect them with resources and basic necessities such as food and clothing. The overall goal is to provide outreach, case management, crisis intervention, transportation and links to healthcare including mental health services, housing services and other social service programs. Food/clothing services and meal services.





250 Vineyard Street, Honolulu, Hawaii 96813

Hoomalu O Na Kamalii Program

Phone number: 808-521-9531

Website: <http://familyprogramshawaii.org/program/hoomalu-o-na-kamalii/>

Services: Hoomalu O Na Kamalii, a receiving home for children entering the child welfare system on Oahu, Hawaii opened in April 2009. The goal of the home is to keep children safe until they can be reunified with their parents, placed with appropriate kin or with culturally similar resource parents in their community.

The ten-bedroom home accommodates 15 children ages 4-17 and provides 24/7 staffing, access to social workers and other health professionals in Hawaii. Sibling groups are able to stay together in the home, greatly reducing the trauma of being removed from their home. Most children are able to remain in their home school while they are assessed and transitioned into safe and loving permanent homes.

Eligibility: The home serves children ages 4 through 17 in the child welfare system. Preference is given to children on the Leeward Coast of Oahu.





Family Promise of Hawaii

Honolulu Center: 245 North Kukui Street #101 Honolulu, HI 96817

Windward Center: 69 North Kainalu Dr. Kailua, HI 96734

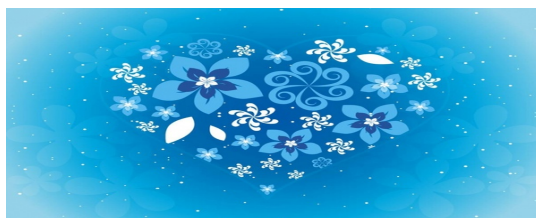
Phone Number: Honolulu Center 548-7478; Windward Center 808-261-7478

Website: <http://www.familypromisehawaii.org/>

Services: The mission of Family Promise of Hawai`i is to mobilize existing community resources to aid families with children experiencing homelessness and help them transition to sustainable independence.

Family Promise of Hawai`i collaborates with local churches, synagogues, mosques and temples to provide overnight accommodations within their buildings. Families are provided a safe place to sleep, healthy meals and hospitality thanks to the help of 1,500 volunteers. During the day, guests work, pursue employment, attend school and/or participate in job training programs. Life skills training, financial management and parenting classes are also offered as part of our program.

A day center complements the overnight shelter network. The Family Center provides access to showers, laundry, phones, computers, mail, fax, copier and play areas for children. Daily transportation is provided between our Family Center and overnight host site. Guests work with case managers on a weekly basis to upgrade their employment, save money for housing, access educational and skill-building training, overcome barriers that led to homelessness and secure permanent housing.





Phone number: 808-853-4660

Services: Hale Kipa provides opportunities and environments that strengthen and encourage youth, their families and communities to actualize their potential and social responsibilities.

Independent Living Program:

Outreach services for youth, ages 12-25, who are or have been in foster care. The following are provided to youth to assist them in preparing for emancipation from the foster care system and into adulthood: assessment/personal planning, life skills assessment, individual support, skill building, college application and scholarships, higher education payee services, and access to housing.

Step-Up Housing:

A program under the Family Unification Program provides Housing Choice Vouchers to youth aging out of foster care. Housing assistance through Section 8 is awarded to young adults for a maximum of 18 months. Participants receive a voucher, funded by the U.S. Department of Housing and Urban Development (HUD). This voucher allows the participants to rent a home in the community of their choice. Participants initially pay between 30% and 40% of their monthly adjusted income toward rent and utilities, with the balance paid by the Section 8 Program. Hale Kipa will assist young adults in completing applications and packets, prepare young adults for Section 8 interviews and provide individual services, support and financial literacy classes until completion of the program.

Emergency Shelter Program:

The Emergency Shelter Program (ESP) is the foundation of Hale Kipa because it provides youth a safe and nurturing environment through its group and foster homes. The ESP provides emergency services, as well as crisis stabilization, assessment, support, and counseling for youth between the ages of 10-17.

Group Shelters:

Girls Emergency Shelter is located in Ewa Beach and it can accept eight females at a time, ages 12 to 17.

Boys Emergency Shelter is located in Kalihi and it can accept eight males at a time

Elegibility: Ages 12 to 17.

Kamala Homes:

Kamala Homes are temporary emergency foster homes providing services to males and females, ages 10 to 17, who may best be served in a home setting. Kamala Home parents are licensed and trained by Hale Kipa.

Eligibility: Our shelters are open to youth who have been abused, neglected, homeless, or facing a family or personal crisis.

Referred by: Self-referrals as well as referrals from Child Protective Services, Family Court, Parents, and Youth Agencies. It is a voluntary program.

Ho'okala Attendant Care:

The Ho'okala (to free or release) Attendant Care Program is a Statewide Diversion program which was implemented in 1993 to insure that juveniles are not secured inappropriately in police lock-ups. The program was created in order to maintain compliance with the Jail Removal and Sight and Sound Mandates of the Juvenile Justice and Delinquency Prevention Act of 1974. It also provides 24 hour accessibility to the police for youth being released from their custody. For further information about the Hale Kipa Ho'okala Attendant Care Program please call (808) 754-9858 (Oahu) or (808) 246-4898 (Kauai).

Eligibility: Status offenders and non-violent minor law violators, between 10 and 17 years of age, who have been arrested by the police.

Ka'i Like Program:

Hale Kipa's Ka'i Like Program works collaboratively with Family Court to provide opportunities and support, so youth involved in the juvenile justice system may succeed in the following areas:

- Be Accountable for Behaviors
- Comply with Probation Rules
- Remain Arrest-free
- Develop New Competencies
- Achieve Educational Goals
- Link to Positive Community Resources

Eligibility: Youth who have been either arrested, petitioned, detained, on protective supervision, on supervised release, or on probation.

Holomua Na Ohana

Website: <http://holomuanaohana.org/>

Weinberg Village Waimanalo

41-490 Saddle City Road, Waimanalo, HI 96795

Phone Number: (808) 259-6658

Services: Weinberg Village Waimanalo is a clean and sober service-enriched transitional housing program for homeless families with minor-aged children. Our Mission is to create a safe, supportive, nurturing environment where the children can grow and flourish while the parents focus on building skills that will lead to self-sufficiency and permanent housing.

The Goal of the program is assist the families in moving forward to a better life. We do this by identifying barriers and skills needed to become financially independent and secure and by helping them to find ways to remove those roadblocks through intensive personalized case management.

Onemalu

48 Belleau Woods Street, Kapolei, HI 96707-2141

Phone Number: (808) 682-3869

Service: Onemalu is a transitional housing program located in Barber's Point. We serve singles, couples and families. Services include one to one case management and guidance counseling.

On-site support services include school supplies and backpacks for students, clothing bank, and food pantry.





The Institute for Human Services
More than food and shelter

Phone Number: (808) 447-2887

Email: Housing@ihs-hawaii.org

Website: <http://www.ihs-hawaii.org/>

Main Numbers:

Kaaahi Service Center: 808-447-2800, **Sumner Service Center:** 808-447-2900

Kaamahu Service Center: 808-447-2862

Selected Service Numbers:

Case Management Services: 808-447-2911

Housing Services: 808-447-2863

Urban Outreach Services: 808-447-2903

Services:

Emergency Shelters:

IHS provides individuals and families with short-term stabilization through shelter options that lead to permanent housing. Programs include meal programs, Sumner men's shelter, Kaaahi women & family shelter, Hale Mauiola at Sand Island, Veterans Engaged in Transition (V.E.T.) house, and Tutu "Bert's" house.

Outreach program:

Responding to unsheltered homeless and offering a path toward stabilization and housing. IHS provides the community with a team of highly trained Outreach Specialists that move freely between the streets and shelter facilities. They offer services to unsheltered homeless persons living on the streets and within encampments.

Children and Family Services:

Our Family Program is designed to facilitate transition into permanent housing by promoting resiliency and skills to maintain permanent residences. Staff and partners focus on communication skills, economic barriers, parenting, coping strategies, and supporting children's educational and social development through enrichment activities and programs.

Housing Support Services:

IHS staff work closely with clients to find a housing solution that best serves their individual needs, including rental assistance, security and utility deposit payment, past due rent payment, and social services. These programs include permanent supportive housing programs, shallow rental assistance and housing placement programs, and mainstream housing placement programs.



Ka Hale A Ke Ola Homeless Resource Center

Central Center: 670 Waiale Road Wailuku, HI 96793

Westside Center: 15 Ipu'Aumakua Lane Lahaina, Hawaii 96761

Phone Number: *Central Center* (808) 242-7600; *Westside Center* (808) 662-0076

Fax Number: *Central Center* (808) 244-0821; *Westside Center* (808) 662-0074

Website: <http://www.khako.org/>

Area served: Maui

Services:

Emergency Housing program:

We provide safe, secure shelter and hot meals in addition to case management services.

Transitional Housing program:

Clients entering the Transitional Housing Program work towards maintaining self-sufficiency with support from a case manager. Housing is combined with wrap-around services to assist the individual with developing stability in their lives. The path toward stability may include studying for the G.E.D., vocational training, learning to manage money, paying down debt or saving up for a home.

Children's services:

As parents work to get back on their feet, their children receive quality care. Every child is assigned their own case manager to monitor their health, safety, and educational growth. Children Case Managers also link children and families to helpful resources available in the community and coordinate after-school programs.





Maui Youth & Family Services, Inc.
 "Building better lives with Hawai'i's families"

PO Box 790006 Paia, HI, 96779

Phone Number: (808) 579-8414

Website: <http://www.myfs.org/index.html>

Services:

Therapeutic Foster Care

This program provides a therapeutic home atmosphere for youth ages 10-17 who are experiencing difficulties socially, behaviorally, academically and/or have mental health needs. The program is designed to help individuals who are not able to receive parental care in their own home and whose emotional problems and behavioral disorders may require above-average tolerance, but who are able to achieve growth in a caring atmosphere where they can receive parental supervision, guidance and support. Therapeutic Foster Care parents are trained to provide positive behavioral support aimed at improving young people's ability to cope with daily stressors, manage emotions and strengthen family relationships.

Independent Living Program

This program helps youth who have aged out of the foster care system with developing and achieving educational and employment goals, as well as with accessing needed community resources. These resources may be related to healthcare, housing or other social service needs. Our counselors help young adults acquire the skills they need to live successful and independent lives.

Outreach and Advocacy

This program provides community-based outreach to at-risk and homeless youth (ages 10-21) and their families in an environment in which they are comfortable. Youth often need short-term outreach intervention as opposed to juvenile justice involvement. An outreach counselor provides advocacy services such as case management and social service referrals and gives families access to professional assistance to help their children make better choices. The program often serves as a resource to local law enforcement agencies as an alternative to incarceration when family is unavailable.

Area Served: Maui

Fees: Call for details

Insurance coverage accepted: Yes, call for Specifics



SAFETY

Hawaii Youth Service Network

677 Ala Moana Blvd., Suite 702 Honolulu, HI 96813

Phone Number: 531-2198

Services: A statewide coalition of youth-serving organizations promoting the well-being of youth and strengthening of families and communities by providing leadership, encouraging collaboration, and creating partnerships statewide.

Eligibility: Anyone may call to find out more about HYSN programs and membership

Referred by: self

Fee: Free

Area served: Statewide

Website: www.hysn.org



Kapiolani Child Protection Center

1319 Punahou Street Honolulu, HI 96826

Phone Number: Oahu: 808-949-9355

Toll-free: 877-709-9355

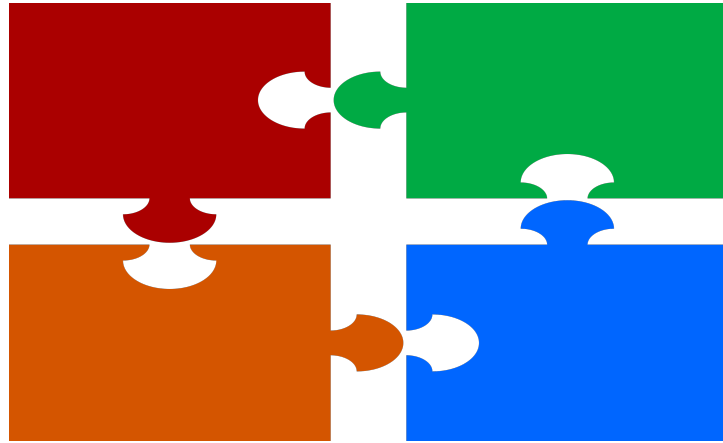
State Child Protective services hotline: 808-832-5300

Services: Our Child Protection Center (CPC) is the state leader in identifying, treating and helping children and families recover from child abuse. KCPC provides assessment and consultation services and an array of treatment services for victims of child maltreatment and their families.

Eligibility: Women and children

Area served: Oahu

Website: <https://www.hawaiipacifichealth.org/kapiolani/services/child-protection/>



COMPREHENSIVE PROGRAMS



Phone Numbers:

O'ahu Campus Main Line: (808) 524-4673

O'ahu Help Line: (808) 521-4357

Hawai'i Island: (808) 935-4673

Maui: (808) 873-4673

Kaua'i: (808) 241-4673

Website: <http://www.catholiccharitieshawaii.org/>

Service: Provides a wide array of support for Hawaii's people in need, from counseling services to housing and hot meals.





Ho'omaka Teen Mentoring

200 N. Vineyard Boulevard, #410 Honolulu, HI 96813

Phone Number: (808) 599-2955

Services: Ho'omaka is an individualized team mentoring program, based on best practices and resilience theory.

The program strives to assist youth in: developing healthy, caring relationships, making informed and healthy decisions, setting personal goals, maintaining a positive path for success, coping effectively with life transitions, attaining a dignified independence

Eligibility: Sexually abused children

Referred by: Child's CWS social worker, resource family, other service provider, self for 18-19 year olds

Fee: Free

Area served: Oahu

Website: www.cahawaii.org

HEART & Soul Program

Services: Through CAH's HEART & Soul Program, children who have been sexually abused and adolescents, ages 9-18, benefit from the safe environment of a small group setting.

Year-round, gender-specific, 8-week sessions allow children to engage in a variety of activities that help them:

- Learn how to identify their feelings
- Understand that they are not alone in their struggles
- Develop skills to support one another
- Regain self-esteem
- Build self-confidence
-

Activities, led by trained CAH staff and interns, include unique, therapeutic approaches to art; expressive movement; yoga; music; horseback riding; outdoor activities; Hawaiian cultural activities; community service; and team-building.

Eligibility: Sexually abused children



2959 Umi St., Lihue, HI, 96766

Youth development programs

Phone Number: 808-245-2873

Services: Programs include:

Making Proud Choices:

Making Proud Choices is a curriculum designed to engage students in using critical thinking skills to process information about abstinence, sexually transmitted infections, birth control methods, decision-making, healthy relationships, and reproductive anatomy and physiology.

Making a Difference:

A Hawai'i DOE-approved abstinence-only pregnancy prevention curriculum that teaches youth to stop, think, and act to focus on their dreams and hopes for the future.

Positive Action:

An evidence-based character development program proven in Hawai'i to significantly reduce drinking, improve grades, decrease bullying and achieve other positive results.

Ke Kahua O Ka Malamalama:

Youth learn and practice Hawaiian arts, cultural traditions, and values taught by selected kupuna and directly experienced while hiking, paddling canoe, and exploring their natural environment.

Y.E.S. Hawai'i Youth Empowerment and Success

Dedicated to positive outcomes through self-determination of foster youth. Independent living skills, service learning, youth advocacy, and positive peer activities offer a community of support with current and former foster youth.

Mother-Daughter Circle

Mother-Daughter Circle is an eight week program bringing mothers and daughters together to examine, strengthen, and celebrate their communication and relationship.

Healthy Teen Relationships/Violence Prevention

Healthy Teen Relationships/Violence Prevention youth are taught key skills to help them give and get respect in their relationships: controlling anger, problem solving, negotiating and compromising, being assertive, fighting fair, understanding, listening, and being a role model.

Fee: Call for details

Area served: Kauai

Website: <http://haleopio.org/>

Hawaii 4-H

1955 East West Road #217, Honolulu HI, 96822

Phone numbers:

Oahu:808-622-4185

Maui:808-244-3242

Kauai:808-274-3471

East Hawaii: 808-981-5199

West Hawaii: 808-322-4892

Services: A non-formal youth development program offering opportunities for youth to develop project/subject matter related skills, and citizenship and leadership skills through 4-H clubs in the community and other delivery modes.

Eligibility: Boys and girls, aged 5-19 years old

Fee: Free to join

Area: Hawaii, Maui, Oahu, and Kauai

Website: www.ctahr.hawaii.edu/4h/





Intensive Support Services

Phone Numbers:

Oahu: Honolulu: (808)733-9393, Central: (808)453-5900, Windward: (808)233-3770
Leeward: (808)692-7700

Maui: Phone: (808) 244-2330

Kauai: Phone: (808)821-0574

Services: PACT Hawaii offers an Intensive Support Services program on Oahu, Maui and Kauai for families and youth with serious behavioral, social and emotional challenges. The services provided are individualized for each child and family.

Eligibility: Youth residents of Kuhio Park Terrace, Kuhio Homes, Puuwai Momi, and surrounding area. Ages 7-18.

Referred by: self (Inform child's social worker)

Fee: Free

Area served: Oahu, Maui, and Kauai

Website: www.pacthawaii.org

Community Teen Program

1485 Linapuni St. #47 Honolulu, HI 96819

Phone Numbers: (808) 842-1843

Services: After-school program promoting the development of healthy youth, families, and community with an abundance of activities and experiences for youth and family members including educational, recreational, community building, and support

Eligibility: Youth residents of Kuhio Park Terrace, Kuhio Homes, Puuwai Momi, and surrounding area. Ages 7-18.

Referred by: self (Inform child's social worker)

Fee: Free

Area served: Oahu (Kalihi and Makalapa areas)

Website: www.pacthawaii.org



SUBSTANCES ABUSE



Al-Anon Family Groups Hawaii Al-Anon/Alateen

Services: Fellowship of relatives and friends of alcoholics who share their experience, strength and hope in order to solve their common problems and to help others do the same

Eligibility: Anyone whose life is or has been affected by someone else's alcoholism

Referral: self (Resource families in crisis need to call child's social worker)

Fee: Free

Area: Statewide

Phone numbers: Oahu: (808) 546-5647, Hawaii: (808) 935-0971, Kauai: (808) 669-5523, Maui and Molokai (808) 242-0296, Lanai: (808) 649-9013

Website: <http://al-anonhawaii.org/> (meeting schedules found online)



Big Island Substance Abuse Council

297 Waiuanuenue Avenue, Hilo, Hawaii 96720

Phone Numbers:

Hilo: (808) 935-4972

Kea'au: (808) 969-9994

Website: <http://www.bisac.org/>

Target Group: Substance Abusers

Area Served: Island of Hawaii

Fees: Sliding scale fee

Insurance coverage accepted: Yes

Services:

Adolescent School Based Treatment

Outpatient treatment is provided at 31 different high, middle and charter schools throughout Hawai'i Island. We utilize an innovative treatment approach to substance abuse prevention, education and treatment.

Adolescent Community Based Treatment

Intensive Outpatient treatment is provided to adolescents in East Hawai'i. This service takes substance abuse treatment to the next level giving adolescents the skills to participate in activities that are beneficial to them and the larger community as well as live a clean and sober lifestyle.



56-660 Kamehameha Hwy. Kahuku, Hawaii 96731

Phone Numbers: (808) 293-7555

Website: <http://www.bobbybenson.org/dev/>

Eligibility: Youth 13-17 who are suffering from alcohol or drug dependence. Dual-diagnosed clients are eligible for treatment at the Center upon psychiatric stability

Area Served: Statewide

Fees: Fee for service

Insurance coverage: Yes, call for specifics.

Service: Our residential treatment program offers a supportive environment in which teenagers and their families can acquire the knowledge and skills needed to overcome the cycle of drug and alcohol addiction. At the Bobby Benson Center, all staff are trained in Risking Connection[®], a trauma informed approach that focuses on the importance of healing relationships to help clients recover.



City and County of Hawaii Youth Services Center

1505 Dillingham Blvd., Suite 110 & 206, Honolulu, HI 96817

Phone Number: (808) 768-5777 **Area served:** Oahu **Fee:** Free

eating Employment Opportunities (CEO) Program: provides young adults 18-21 years old who were previously involved in the juvenile justice system (and not convicted as an adult under Federal or State law) the opportunity to achieve educational, training, and employment goals through participation in various services and activities -- GED, tutoring, mentoring, subsidized work experience, employment counselling, abuse treatment services, parenting classes, legal services and more. Phone: (808)768-5786

Juvenile Justice Center: provides accountability-based sanctions to status offenders and first-time law violators, ages 14-17, to prevent them from further involvement in the justice system. Services include anger management classes, mediation, substance abuse counseling, leadership development, and pre-employment training. Phone: (808)768-5786

State Prevention Framework: State Incentive Grant provides a life skills training program to prevent youth, ages 12-17, from using tobacco, alcohol, and drugs. Phone: (808)768-5786

Youth Operator Program: offers youth a broad range of coordinated career services. This includes opportunities for assistance in academic and occupational learning; development of leadership skills; and preparation for further education and training to ensure youth can obtain a career in the area of their choice. Phone: (808)768-5888

Youthbuild Honolulu: provides alternative education and job training services to non-high school graduates, ages 18-24. Services include a Hawaii Adult Community School Diploma as well as vocational and hands-on construction training, leadership development, and job readiness and placement services. Phone: (808)768-5888

Eligibility: Youth ages 14-24; low-income or an offender; each program has own criteria

Referred by: Probation officer, court, or self (Inform child's social worker)



1130 North Nimitz Highway, A259, Honolulu HI, 96827

Phone Number: (808) 545-3228, interisland: (800) 845-1946 **Area Served:** Statewide

Website: <http://www.drugfreehawaii.org/> **Fees:** Free

Services: Youth development and youth leadership has been a cornerstone of CDFH programs since its inception. CDFH believes that effective programs for developing youth resilience and competence in all areas of health and wellness provide resources for learning and personal growth, positive relationships with caring adults, and opportunities for youth and adults to partner in meaningful action.



45-035 Kuhonu Place Kaneohe, Hawaii 96744

Phone Number: (808) 235-3691; 1(800) 872-2525 toll free

Website: <http://www.habilitat.com/>

Target Group: Youth 15+, adults

Area Served: Statewide, national, international

Services: Habilitat's proven success rate is among the highest in the world. We are not a 12 step program. We have understood for many years that long-term drug rehabilitation alone is not enough to ensure long-term success. People need marketable skills and work ethics if they are to be competitive in today's workforce. Our vocational training programs are second to none in the substance abuse treatment community. We motivate the unmotivated and often succeed where other programs have failed.

Fees: Fee for service

Hana Youth Center

5091 Uakea Rd, Hana, HI 96713

Phone Number: 808-248-8504

Website: <http://www.hanayouthcenter.com/home.html>

Services:

The Hana Youth Center was established in 1986 as an after school drop in center for the youth of Hana. We provide a setting that is fun; free from the influence of tobacco, drugs, & violence, where Hawaiian values are promoted.

Target Group: Youth ages 8-18 from Keanae to Kahikinui

Area Served: Maui

Fees: Membership is free

Hawaii Counseling and Education Center

970 North Kalaheo Avenue, Kailua, Hawaii 96734
98-084 Kamehameha Highway, Aiea, Hawaii 96701
65-1298 Kawaihai Avenue, Kamuela, Hawaii 96743

Phone Number: (808) 254-6484

Website: <http://hcechawaii.com/>

Target Group: All ages

Area Served: Oahu

Fees: Fee for service

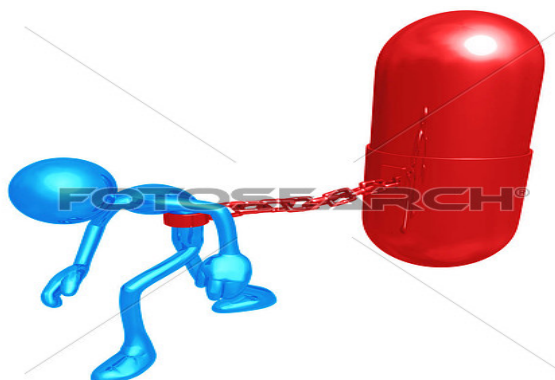
Insurance coverage: HMSA, Quest, Champus/Tricare, Queens, Pacific Health Care, and other Health Plans. Treatment may be possible even if you have no insurance/money.

Service:

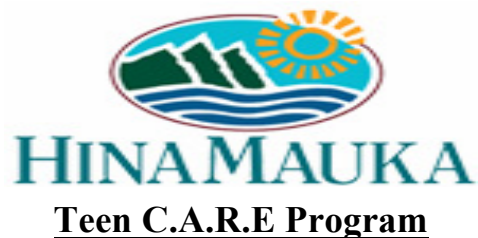
Clinical services: The Hawaii Counseling & Education Center Inc. (HCEC) offers a full range of outpatient clinical services to individuals, couples, families and groups. Clinical services are provided to children, adolescents and adults, including substance abuse and anger-related services.

Ke Ala Lai ~ Outpatient Substance Abuse Programs - Adolescents and Adults:

HCEC has an individualized outpatient substance abuse treatment program for adolescents and adults. These programs are based on principles that help people realize they can live a clean and sober life. The program is approximately three to six months in length, based on individual progress. Treatment is provided by experienced counselors, who will assess needs and develop an individualized treatment plan with the client.



k1875602 www.fotosearch.com



Phone Numbers:

Kaneohe Teen CARE • 808.382.6099

Temple Valley Shopping Center, 47-388 Hui Iwa Street, Kaneohe 96744

Services take place on primarily on Saturdays, but adolescent assessments and other services are available during the week – please call for an appointment

Waianae Teen CARE • 808.382.6099

Boys and Girls Club of Hawaii, 85-165 Plantation Road, Waianae 96792

Open Tuesday through Friday – please call for an appointment

Waipahu Teen CARE • 808.677.6711

94-216 Farrington Highway, Suite 304, Waipahu 96797

Open Tuesday through Saturday – please call for an appointment

Substance abuse prevention (Oahu and Kauai): (808) 256-0399

Services: Teen CARE (Counseling, Awareness, Rehabilitation, Education) provides quality substance abuse services to adolescents. Our treatment programs are evidence-based treatment and provides youth with outpatient treatment at both school-based and community-based sites. Teen CARE also provide prevention services to youth, their families, and their communities throughout Oahu and Kauai. Our counselors give youth, families, school staff, and community professionals easy access to adolescent substance abuse treatment services such as assessment, counseling, group, and skill-building activities, while ensuring privacy and continual support.

We help adolescents reduce or abstain from alcohol or drug use, reflect on their behaviors and begin to take responsibility for their choices and the consequences that follow. Teen CARE provides support and encouragement, models healthy communication and teaches the value of staying in school, avoiding illegal activity, trusting others, and giving and receiving respect.

Teen CARE is now in 20 middle and high schools on O‘ahu and Kaua‘i, as well as providing community based services to adolescents at our Waianae, Waipahu, and Kaneohe locations.

Eligibility: Youth enrolled at one of the schools that offer services, a history of alcohol or other drug abuse or dependency, a willingness to participate in the treatment process.

Referred by: Self, family, friends, or school staff (Inform child's social worker)

Fee: Free

Area served: Oahu, Kauai

Website: www.hinamauka.org/teencare



Kāhi Mōhala
Behavioral Health
A Sutter Health Affiliate

91-2301 Old Fort Weaver Road Ewa Beach, Hawaii 96706

Phone Number: (808) 671-8511

Website: <http://www.kahimohala.org/>

Services:

Acute Adolescent Inpatient Services: Provides a structured environment for adolescents in need of a comprehensive evaluation, intensive treatment, and psychiatric management and stabilization. The services are specifically designed for the changing needs of young people.

Area Served: Statewide

Fees: Fee for service

Insurance coverage accepted: Yes, call for Specifics





MARIMED FOUNDATION



CHARTING THE COURSE FOR HAWAI`I YOUTH

45-021 Likeke Place Kaneohe, Hawaii 96744

Phone Number: 808-235-1377

Email: info@marimed.org

Services: The Kailana (calm seas) Program is a highly-structured, staff-secure, residential program for high risk Hawai`i adolescents needing comprehensive treatment and education, including mental health services. Kailana, run by the non-profit Marimed Foundation, combines individual, group and family therapy with educational and vocational services, ocean and land-based therapeutic and recreational activities including sailing and ocean voyaging on Makani Olu (Marimed's sail training vessel), canoe paddling, agriculture, aquaculture, and culinary opportunities. Kailana is unique in its ocean-experiential approach to serving youth with moderate to severe emotional and behavioral problems. The Kailana Program helps adolescents in their personal development, family and community relationships, and in their successful return to home, school or appropriate community alternative.

Eligibility: Males and Females, 14 through 17, who face difficult emotional and educational challenges requiring something more structured and restrictive than school or home-based services, but who do not need to be hospitalized or incarcerated. This program specializes in adolescent males with conduct disorders and those dually diagnosed with chemical dependency.

Referred by: All youth enrolled in the program are referred directly by the Child and Adolescent Mental Health Division of the State Health Department. Many youth are involved with the Family Court, the Office of Youth Services, or the Department of Education special education. For enrollment questions or assistance contact Dane Ganes, Quality Assurance and Intake Director at (808) 239-2939 ext. 208 or Blaine Nakaoka, Quality Assurance Assistant at 239-2939 ext. 207.self (Inform child's social worker)

Fee: Free

Area served: Oahu

Website: <http://www.Marimed.org>



PO Box 790006 Paia, HI, 96779

Phone Number: (808) 579-8414

Website: <http://www.myfs.org/index.html>

Services:

Outpatient Substance Abuse Treatment:

This program addresses a recognized need in Maui County to break the vicious cycle of substance abuse among youth. Individualized treatment for 12-17 year-olds includes clinical supervision, individual and family counseling, group therapy, education about addiction as well as activities and recreational excursions that reflect Hawaiian cultural values.

Ho'ala Mai

This program uses evidence-based interventions, case management, cultural activities and referral to other community services to divert youth (ages 12-17) on the path to incarceration. Our counselors, who are available 24/7, address the special issues and problems associated with supervising juvenile offenders as they work hand-in-hand with youth that are in the Judiciary system to encourage them to ho'ala mai (to awaken, to rise up). We have a comprehensive approach that includes identifying potential underlying reasons for the youth's behavior (substance abuse, mental health or trauma issues) and assessing the family's needs as well as the adolescent's educational needs (general education, credit recovery or GED attainment).

School-Based Services (Ke Ala Pono)

This program is available at almost all public middle and high schools in Maui County for students who are using/abusing substance or have family members who are doing so. Ke Ala Pono translates to "The Right Path" and includes on-site assessment, referral, treatment planning, education about addiction and coping skills, as well as individual and family counseling. It is a confidential program that provides students a safe haven to seek help without fear of reprisal.

Tobacco, Alcohol, Drug and Pregnancy Prevention

This program is provided through in-school classes/workshops and after-school activities to youth in grades 6-8. After-school activities include journal-writing, beach clean-ups, community-service projects and trips to museums, the aquarium, ziplining, stand-up paddling, the Hawaiian Cultural Program at the Maui Tropical Plantation, etc.

Area Served: Maui

Fees: Call for details

Insurance coverage accepted: Yes, call for Specifics



1335 Kalihi Street Honolulu, Hawaii 96819

Phone Number: (808) 848-2494

Target Group: Adolescents on Oahu with alcohol and drug problems or adolescents who are at high risk for substance abuse, legal, educational, family and other problems.

Area Served: Oahu

Fees: Free

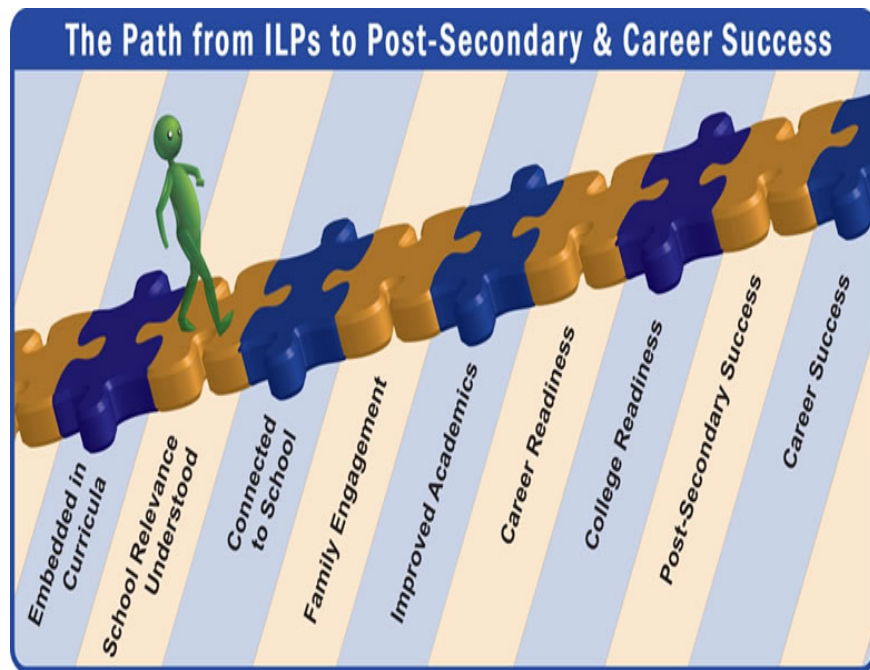
Services: (1) School-based substance abuse treatment for adolescents in the following high schools and middle schools: Kailua, Kaimuki, Roosevelt, McKinley, Farrington, Aiea, Moanalua, Waipahu, Campbell, Leilehua, Waialua, Kapolei, Nanakuli and Waianae High Schools; and Ilima, Waialua, Wahiawa, Jarrett, Dole, Central, Kalakaua, Kawanakoa, Stevenson, Aiea, Moanalua, Kapolei, Waipahu and Nanakuli Middle Schools (2) Court-ordered adjudicated youth up to age 18. Services are provided to youth that are referred to this program through the State of Hawaii Family Court, First Circuit Court.



POST-SECONDARY

AND

CAREER SUCCESS



City and County of Hawaii Youth Services Center

1505 Dillingham Blvd., Suite 110 & 206, Honolulu, HI 96817

Phone Number: (808) 768-5777

Services:

Creating Employment Opportunities (CEO) Program: provides young adults 18-21 years old who were previously involved in the juvenile justice system (and not convicted as an adult under Federal or State law) the opportunity to achieve educational, training, and employment goals through participation in various services and activities -- GED, tutoring, mentoring, subsidized work experience, employment counselling, abuse treatment services, parenting classes, legal services and more. Phone: (808)768-5786

Juvenile Justice Center: provides accountability-based sanctions to status offenders and first-time law violators, ages 14-17, to prevent them from further involvement in the justice system.

Services include anger management classes, mediation, substance abuse counseling, leadership development, and pre-employment training. Phone: (808)768-5786

State Prevention Framework: State Incentive Grant provides a life skills training program to prevent youth, ages 12-17, from using tobacco, alcohol, and drugs. Phone: (808)768-5786

Youth Operator Program: offers youth a broad range of coordinated career services. This includes opportunities for assistance in academic and occupational learning; development of leadership skills; and preparation for further education and training to ensure youth can obtain a career in the area of their choice. Phone: (808)768-5888

Youthbuild Honolulu: provides alternative education and job training services to non-high school graduates, ages 18-24.

Services include a Hawaii Adult Community School Diploma as well as vocational and hands-on construction training, leadership development, and job readiness and placement services. Phone: (808)768-5888

Eligibility: Youth ages 14-24; low-income or an offender; each program has own criteria

Referred by: Probation officer, court, or self (Inform child's social worker)

Fee: Free

Area served: Oahu



Epic Foundation ('Imi'ike)

2535 South King St. Room 304, Honolulu, HI, 96826

Phone Numbers:

Oahu: 808-955-6100

Project director: (808) 393-1282

Email: epictutor@hawaiiantel.net

Services: Na Lei Mae`ole programs are designed to provide educational and support services to current and former foster youth and their families. An emphasis is placed on one-to-one and/or small group tutoring utilizing culturally congruent methods of engagement, teaching, support, and foster family involvement.

Current Na Lei Mae`ole programs include:

The 'Imi 'Ike Tutorial Center

Located in Mo`ili`ili and Waipi`o, O`ahu, The `Imi `Ike Tutorial Center is uniquely situated and designed to meet the comprehensive educational needs of Hawaii`s foster youth population.

The Aloha Kaulana Scholarship Program

This program provides opportunities for foster youth to receive tutoring free of charge from EPIC Education tutors at one of its two tutorial sites. Scholarships are awarded based upon availability of funds.

Enrichment Workshops

Currently robotics, Hawaiian language and culture, and engineering are offered as enrichment programs.

Eligibility: Youth ages 5-10 formerly in foster care with priority given to those with special needs

Referred by: self, school, or providers (Inform child's social worker, if applicable)

Fee: Free

Area served: Oahu

Website: <http://www.epicfoundhawaii.org/>



250 Vineyard Street, Honolulu, Hawaii 96813

eXcel

Phone Number: (808) 521-9531

Services: The eXcel program guides high school seniors and foster youth on Oahu to successfully prepare for and enter post-secondary education or vocational training. Support is provided during the application process through their initial college or vocational experience and through graduation, if needed or requested.

Eligibility: Current and former foster youth on O‘ahu considering higher education.

Location: Oahu

Website: <http://familyprogramshawaii.org/program/excel/>

Hoololi Mua No Ke Ola Senior Program (HSP)

Phone Number: (808) 521-9531

Services: Hoololi Mua No Ke Ola Senior Program (HSP) guides high school seniors in out-of-home placements to successfully prepare for and enter postsecondary education, vocational and employment training in East Hawaii (Big Island Hawaii).

Services offered to prepare transitioning foster youth to enter and successfully complete post-secondary education or vocational training include: independent living skills, vocational and educational assistance, career and interest exploration, employment training, setting educational or vocational goals, support in choosing, applying for, and enrolling in educational or vocational training, assistance in completing financial aid forms and scholarship applications, educational advising, tutoring, training, and monthly progress meetings

Eligibility: Ho‘ololi mua no ke ola serves GED and high school seniors in East Hawaii (Big Island Hawaii), ages 17-21, who are in out-of-home placement, foster care, adoption, guardianship, or Power of Attorney.

Area served: East Hawaii (Big Island)

Website: <http://familyprogramshawaii.org/program/hoololi-mua-no-ke-ola-senior-program/>



Hawaii Job Corps Center

41-467 Hihimanu St., Waimanalo, HI 96795

Oahu: (808) 259-6001 **Admission:** (808) 259-3220 **Toll Free** (800) 733-JOBS

Career Training program:

Hawaii Job Corps provides career technical training in several vocational trades including automotive, business technology, culinary arts, facilities maintenance, health occupations/certified nursing assistant, landscaping, medical office support, and painting.

Eligibility: Youth 16-24 years old. Meet federal low income guidelines

Referred by: self (Child's social worker for children in CWS)

Area served: Oahu and Maui **Fee:** Free

Website: <http://hawaii.jobcorps.gov/home.aspx>

*Oahu center tours are scheduled every other Thursday at 9am



4211 Waialae Ave., Suite 1020 Honolulu, HI 96816

Phone Number: (808) 735-1221

Website: www.kupuhawaii.org

Area served: Statewide

Service: Mission is to empower youth to serve their communities through character-building, service-learning, and environmental stewardship opportunities that encourage integrity (pono) with God (Ke Akua), self and others.

The communityU program:

The purpose of the CommunityU program is to equip under-resourced young adults ages 16-24 with the experiences, education, training, and support needed to become productive members of society with a heart to serve and positively impact the community around them. CommunityU provides training and support in the areas of team work and life skills, personal and cultural development, education, and job readiness. Participants find purpose and motivation to take their next steps forward in life when CommunityU enables them to work in the lo'i mud, restore fishponds, plant native species, or carve papa ku'i 'ai (traditional Hawaiian poi boards) throughout the island of O'ahu. CommunityU is conducted in a team-based cohort setting within a nurturing environment that surrounds participants with the camaraderie of their peers and mentoring by Kupu staff.

Eligibility: Young adults 16-24 years old **Fee:** Free



POSITIVE YOUTH DEVELOPMENT



95 Mahalani Street, Suite 24 Wailuku, HI 96793

Phone Number: (808 242-8476

Email: Info@AKeikisDream.org

Service: Modeled after national wish-fulfilling programs for children, AKD provides Dreams to children between the ages of 4 and 18 who face a crisis of any nature—abuse, neglect, homelessness, medical or psychological issues, personal loss or family difficulties. Qualified social services programs and professionals refer eligible children to AKD.

Children who come to AKD choose, create and experience his or her own special Dream on Maui. This child-directed approach not only offers a reprieve from suffering, but validates the child's self-worth—sending positive messages of support and encouragement, reminding the child what it is to have hope.

Eligibility: Children (4-18 years old). Reason for referral must consist of a “crisis” rather than a long-term chronic issue (e.g. disability). The child will need to physically participate in a Dream activity and be able to make his or her own choice in identifying his/her Dream option.

Referred by: a professional social service and family provider

Fee: Free

Area served: Maui County

Website: www.akeikisdream.org



Adult Friends for Youth

3375 Koapaka St. Suite ZB-290, Honolulu HI, 96819

Phone Number: 808-833-8775

Email: afy@afyhawaii.com

Services: To break the cycle of violence, despair, and unhealthy lifestyles that are often passed down from generation to generation, AFY has developed an effective therapeutic approach to combat violence, drugs, crime, teen pregnancy, family dysfunction, learning disabilities, and anti-social behavior among the very high-risk youth, both in and outside of the classroom. AFY recognizes the importance of reaching teens with problems and helping them become successful people.

School Centered Program:

Provides group psychotherapy and counseling to troubled students within their school settings. Students are referred by counselors, teachers, and principals.

Neighborhood Centered Program:

AFY's gang therapy program. It is Hawaii's only program that assists youth gangs as whole entities and the only gang program in the United States with a replicable therapeutic methodology.

Clinical Competency-Based Alternative Education:

Builds on the school and neighborhood programs, and helps school dropouts obtain a high school diploma.

Student Anti-Bullying and Violence Convention:

The convention is devoted towards educating students about the effects and consequences of bullying, and to encourage all students to show respect, empathy, compassion, love and acceptance toward others.

International 7-Aside Rugby Tournament:

AFY also provides cultural experiences to youth of Pacific island backgrounds. Athletics, including the fast and exciting 7-aside rugby, offer an outlet for pent-up energy and a diversion from the monotony of just hanging out

Fee: Free

Area served: Oahu

Website: <http://afyhawaii.com/index.html>



Big Brothers Big Sisters

418 Kuwili Street, Suite 106 Honolulu, HI 96817

Phone numbers: Honolulu (808) 521-3811, Maui☎(808) 242-9754, Kauai: (808) 855-2900, Hilo: (808) 430-5898

Email: bbbs@bbbshawii.org

Locations:

Maui: 200 Waimaluhia Lane Wailuku, HI 96793

Kauai: 4273 Rice Street, Suite 1 Lihue, HI 96766

Hawaii Island: P.O.Box 95254 Hilo, HI 96720

Services: Our mission is to provide children facing adversity with strong and enduring, professionally supported one-to-one relationships that change their lives for the better, forever. We partner with parents/guardians, volunteers and others in the community, and hold ourselves accountable for each child in our program achieving higher aspirations, greater confidence and better relationships, while also avoiding risky behaviors and achieving educational success.

Community-based mentoring program:

Youth and adult mentors meet one-on-one twice per month for a few hours at a time. Matches spend time doing activities they enjoy in the community and are supported by a Match Coach who is there to offer professional guidance.

School-based mentoring program:

Elementary school students and mentors (typically high school students) meet one-on-one in a supervised group setting afterschool once a week alongside other matches. A member of our staff is on site to lead each mentoring session.

Holomua online mentoring program(Oahu only):

This new online mentoring program pairs Castle High School students with adult volunteers to promote college and career readiness. Pairs communicate through weekly email prompts and meet in person once a month.

Eligibility: Community-based program is open to children ages 5-18. School-based mentoring is offered to elementary school students.

Areas Served: All Islands

Fee: Free



Boy Scouts of America, Aloha Counsel

Oahu: 42 Puiwa Road Honolulu, HI 96817

Hawaii: 580 Stainback Hwy, Hilo

Phone Numbers:

Oahu & Kauai: (808) 595-6366

Hawaii: (808) 959-0079

Email: *Oahu:* AlohaCouncilBSA@Scouting.org

Hawaii: bigislandbsa@hawaii.rr.com

Service: Provides an educational program for boys and young adults to build character, to train in the responsibilities of participating citizenship, and to develop personal fitness.

Eligibility: Boys ages 7-20 years old; different programs have different eligibility guidelines.

Area served: All Islands

Website: www.alohacouncilbsa.org



**BOYS & GIRLS CLUB
OF HAWAII**

Administrative Office

345 Queen Street, Ste. 900

Honolulu, HI 96813

Phone: (808) 949-4203

Fax: (808) 955-4496

Service: Boys & Girls Club Programs are evidence-based and intentional methods designed to inspire and enable youths to realize their full potential as productive, responsible and caring citizens. Whether it's basketball coaching, mentoring, dance lessons or computer classes—just to name a few—BGCH programs touch every aspect of our young peoples' lives.

Eligibility: Boys and girls aged 7-17

Fee: \$1/year for membership; various fees for certain services (call for more info)

Website: www.bgch.com



Captain's Club Hawaii

P.O. Box 29571 Honolulu, HI 96820

Phone Number: (808) 456-5103

Website: www.captainsclubhi.org

Services: Focusing on foster and at-risk youth, ages 10 through 16, Captain's Club recruits through numerous agencies in the community both private and State operated. Starting off as a team in an alien environment, each youth is on a level playing field. Confidence, which is carried back onto land, helps them steer through the next challenge these youths will face. These positive results have been witnessed repeatedly by guardians, parents, and social workers.

Eligibility: Foster and at-risk youth 10-16 years old with a good attitude and desire to have fun

Referred by: Self (Inform child's Social Worker)

Fee: Free

Area served: Oahu

EPIC OHANA INC.

Hawai'i Youth Opportunities Initiative

Oahu: 1130 N. Nimitz Highway, Suite C210 Honolulu, HI 96817

Hilo Office: 101 Aupuni St, Suite 123C Hilo, HI 96720

Kona Office: 73-5618 Maiau St., Suite B-201 Kailua-Kona, HI 96740

Oahu: (808) 838-7752

Email: epic@epicohana.org

Hawaii – Hilo: (808) 961-9880

Hawaii-Kona: (808) 329-4688

Toll-free: 1-866-636-1644

Service: The mission of the Hawai'i Youth Opportunities Initiative is to ensure that young people — primarily those between ages 14 and 26 — make successful transitions from foster care to adulthood. We do this by working with public and private partners on the state and local level to improve policies and practices, promote youth engagement, apply evaluation and research, and create community partnerships. Our work creates opportunities for young people to achieve positive outcomes in permanence, education, employment, housing, health, financial capability, and social capital.

Eligibility: Ages 14-26

Referred by: Child's social worker for children in CWS

Fee: Free

Area served: Statewide

Website: www.epicohana.org



Yes Hawaii Program

250 Vineyard Street Honolulu, HI 96813

Office: (808) 521-9531 or (808) 545-1130

Neighbor Islands: 1-866-545-0882

Services: Youth Empowerment & Success Hawaii (YES Hawaii) provides peer support and outreach services to youth and young adults aged 14-26 who have had involvement with the child welfare system. The program is statewide and events are held in Oahu, Maui, Kauai East Hawaii and West Hawaii. The program is youth driven and designed to engage foster youth in Hawaii in peer mentoring and meaningful and supportive events and activities.

Eligibility: All youth and young adults, ages 14-26, who have had any involvement with the child welfare system on Oahu, East Hawaii, West Hawaii, Maui, and Kauai are eligible.

Fee: Free

Area served: Statewide

Website: <http://familyprogramshawaii.org/program/yes-hawaii/>



Girl Scouts of Hawaii

410 Atkinson Drive, Suite 2E1 Honolulu, HI 96814

Oahu: (808) 595-8400

Maui: (808) 244-3744

Kauai: (808) 245-4984

Hawaii: (808) 966-9376

Website: <https://www.gshawaii.org/>

Service: National organization for girls dedicated to inspire girls with the highest ideals of character, conduct, patriotism, and service so that they may develop an awareness of their unique worth as individuals and establish life values.

Eligibility: Any girl in grades K–12 can join the fun at Girl Scouts. Whether you want to be part of a troop, sign up for exciting series or events, explore the outdoors, or travel the world, each age level has something for you.

Fee: \$12/year registration fee; Dues are set by the troop Area served: Oahu, Maui, Kauai, Hawaii



2959 Umi St., Lihue, HI, 96766

Youth development programs

Phone Number: 808-245-2873

Services: Programs include:

Making Proud Choices:

Making Proud Choices is a curriculum designed to engage students in using critical thinking skills to process information about abstinence, sexually transmitted infections, birth control methods, decision-making, healthy relationships, and reproductive anatomy and physiology.

Making a Difference:

A Hawai'i DOE-approved abstinence-only pregnancy prevention curriculum that teaches youth to stop, think, and act to focus on their dreams and hopes for the future.

Positive Action:

An evidence-based character development program proven in Hawai'i to significantly reduce drinking, improve grades, decrease bullying and achieve other positive results.

Ke Kahua O Ka Malamalama:

Youth learn and practice Hawaiian arts, cultural traditions, and values taught by selected kupuna and directly experienced while hiking, paddling canoe, and exploring their natural environment.

Y.E.S. Hawai'i Youth Empowerment and Success

Dedicated to positive outcomes through self-determination of foster youth. Independent living skills, service learning, youth advocacy, and positive peer activities offer a community of support with current and former foster youth.

Mother-Daughter Circle

Mother-Daughter Circle is an eight week program bringing mothers and daughters together to examine, strengthen, and celebrate their communication and relationship.

Healthy Teen Relationships/Violence Prevention

Healthy Teen Relationships/Violence Prevention youth are taught key skills to help them give and get respect in their relationships: controlling anger, problem solving, negotiating and compromising, being assertive, fighting fair, understanding, listening, and being a role model.

Fee: Call for details

Area served: Kauai

Website: <http://haleopio.org/>

Harry and Jeanette Weinberg Kukui Center

Hawaii Foster Youth Coalition

245 N. Kukui Street, Suite 203 Honolulu, HI 96817

Phone Number: (808) 545-5683

Website: www.kidshurttoo.org

Services: We help transition youth aged 14-24 in the foster care system and other out-of-home placements to build a successful future. This is done by partnering with others to provide training in leadership, independent living skills, financial literacy, healthy relationships, computer skills, conflict resolution and other areas that will be helpful to them. We prepare them for careers, job training and higher education through workshops on scholarships, career options and provide mentoring. Other activities also include legislative advocacy and youth help train social workers and foster parents on the needs of the children in their care.

Eligibility: Current and former foster youths, ages 14-24 **Fee:** Free

Referred by: self (Inform child's Social Worker, if applicable) **Area served:** Oahu



Hawaii Speed and Quickness

Honolulu, HI, 96826

Phone: (808) 228-7447

Website: www.hawaiispeedandquickness.com

Email: hawaiispeedandquickness@gmail.com

Service: Clinics were first established in order to instruct Hawaii youths looking to gain a competitive edge through innovative and state-of-the-art training techniques designed to improve an athlete's speed, quickness, agility and balance. The company has since expanded to include an array of services targeting at-risk youth and disadvantaged communities. HSQ's services have included recreational programming; speed and agility clinics; evening school based clinics for parents, coaches and community members; group mentoring with University of Hawaii student-athletes at schools and clinics; weekend and after school programming and the creation and implementation of a drug prevention campaign that visits elementary schools with student-athletes.

Eligibility: Clinics are divided into 2 divisions: (A) Keiki Division; Ages 5-8, (B) Youth Division; Ages 9-13. **Fee:** Free

Area served: Our biggest camp is the Hawaii football camp on Oahu, but we also bring sports like volleyball, soccer, basketball, football, cheerleading and baseball across the islands.



Phone: 1-844-588-IMUA (4682)

Email: hawaiispeedandquickness@gmail.com

Services: IMUA KĀKOU is a new program in Hawai‘i that helps young adults who exit foster care at 18 or older to build successful futures.

Eligibility: You are eligible to participate in the IMUA KĀKOU program if you are between the ages of 18 and your 21st birthday and you meet one of the following criteria:

1. You turned 18 or older while in foster care (Child Welfare Services) in Hawai‘i and emancipated or “aged out” of the system.
2. You were placed in legal guardianship or adopted at age 16 or older from foster care (Child Welfare Services) in Hawai‘i. (benefits may be limited to financial support only).

Fee: Free

Website: <http://www.imua21.org/>

Area served: Statewide



Kids Hurt Too Peer Support Program

245 North Kukui Street, Suite 203 Honolulu, HI 96828

Phone Number: 808-545-5683 **Area served:** Oahu

Services: Peer support groups for children, teens, and their caregivers for those who have experienced loss of a loved one through divorce, incarceration, death, suicide, and groups for children and teens in foster care

Eligibility: Children 2-19 who have experienced loss of someone close to them

Referred by: self (Resource families in crisis need to call child's social worker)

Fee: Free **Website:** www.kidshurttoo.org



MARIMED FOUNDATION



CHARTING THE COURSE FOR HAWAI`I YOUTH

45-021 Likeke Place Kaneohe, Hawaii 96744

Phone Number: 808-235-1377

Email: info@marimed.org

Services: The Kailana (calm seas) Program is a highly-structured, staff-secure, residential program for high risk Hawai`i adolescents needing comprehensive treatment and education, including mental health services. Kailana, run by the non-profit Marimed Foundation, combines individual, group and family therapy with educational and vocational services, ocean and land-based therapeutic and recreational activities including sailing and ocean voyaging on Makani Olu (Marimed's sail training vessel), canoe paddling, agriculture, aquaculture, and culinary opportunities. Kailana is unique in its ocean-experiential approach to serving youth with moderate to severe emotional and behavioral problems. The Kailana Program helps adolescents in their personal development, family and community relationships, and in their successful return to home, school or appropriate community alternative.

Eligibility: Males and Females, 14 through 17, who face difficult emotional and educational challenges requiring something more structured and restrictive than school or home-based services, but who do not need to be hospitalized or incarcerated. This program specializes in adolescent males with conduct disorders and those dually diagnosed with chemical dependency.

Referred by: All youth enrolled in the program are referred directly by the Child and Adolescent Mental Health Division of the State Health Department. Many youth are involved with the Family Court, the Office of Youth Services, or the Department of Education special education. For enrollment questions or assistance contact Dane Ganes, Quality Assurance and Intake Director at (808) 239-2939 ext. 208 or Blaine Nakaoka, Quality Assurance Assistant at 239-2939 ext. 207.self (Inform child's social worker)

Fee: Free

Area served: Oahu

Website: <http://www.Marimed.org>



Intensive Support Services

Phone Numbers:

Oahu: Honolulu: (808)733-9393

Central Oahu: (808)453-5900

Windward: (808)233-3770

Leeward: (808)692-7700

Maui: Phone: (808) 244-2330

Kauai: Phone: (808)821-0574

Services: PACT Hawaii offers an Intensive Support Services program on Oahu, Maui and Kauai for families and youth with serious behavioral, social and emotional challenges. The services provided are individualized for each child and family.

Eligibility: Youth residents of Kuhio Park Terrace, Kuhio Homes, Puuwai Momi, and surrounding area. Ages 7-18.

Referred by: self (Inform child's social worker)

Fee: Free

Area served: Oahu, Maui, and Kauai

Website: www.pacthawaii.org

Community Teen Program

1485 Linapuni St. #47 Honolulu, HI 96819

Phone Numbers: (808) 842-1843

Services: After-school program promoting the development of healthy youth, families, and community with an abundance of activities and experiences for youth and family members including educational, recreational, community building, and support

Eligibility: Youth residents of Kuhio Park Terrace, Kuhio Homes, Puuwai Momi, and surrounding area. Ages 7-18.

Referred by: self (Inform child's social worker)

Fee: Free

Area served: Oahu (Kalihi and Makalapa areas)

Website: www.pacthawaii.org



Sounding Joy Music Therapy Inc.

1314 S. King Street, Suite 711 Honolulu, HI 96814

Phone Number: (808) 593-2620 **Website:** www.soundingjoymt.org

Email: postmaster@soundingjoymt.org

Services: Sounding Joy's Direct Services include music therapy consultation, assessment, treatment planning, evaluation, and individual/group sessions conducted by Board Certified Music Therapists (MT-BC's). Music Therapy for life skills development for youth. Music Therapy for family mediation.

Eligibility: Services are available to anyone, but people with disabilities receive priority. Music therapy sessions can be offered either individually or in group, according to the client's needs.

For Music Therapy youth & family services: Youths and young adults ages 10-21 with at-risk behaviors or circumstances, mental health issues, or involved in the juvenile justice system.

For Music Therapy for family mediation: Families with marital, economical, mental, or disability-related stress, emotional and psychosocial needs, single parent, or individuals in family crisis. At least one family member must be between the ages of 10 and 21.

Referred by: self or by community agency (Inform child's social worker)

Fee: Grants and scholarships available

Area served: Oahu and Maui.

Direct Services for Maui residents can be obtained through our Maui associate, Mr. Richard Kuykendall, MS, RMT, at Pukalani Music Therapy Center: 2905 Iolani Street, Pukalani, HI 96768. You may email (rakrmt@maui.net) or call Richard at (808) 573-0424, regarding services on Maui.





Ho'omaka Teen Mentoring

200 N. Vineyard Boulevard, #410 Honolulu, HI 96813

Phone Number: (808) 599-2955

Services: Ho'omaka is an individualized team mentoring program, based on best practices and resilience theory.

The program strives to assist youth in: developing healthy, caring relationships, making informed and healthy decisions, setting personal goals, maintaining a positive path for success, coping effectively with life transitions, and attaining a dignified independence

Eligibility: Sexually abused children

Referred by: Child's CWS social worker, resource family, other service provider, self for 18-19 year olds

Fee: Free

Area served: Oahu

Website: www.cahawaii.org

HEART & Soul Program

Services: Through CAH's HEART & Soul Program, children who have been sexually abused and adolescents, ages 9-18, benefit from the safe environment of a small group setting.

Year-round, gender-specific, 8-week sessions allow children to engage in a variety of activities that help them:

- Learn how to identify their feelings
- Understand that they are not alone in their struggles
- Develop skills to support one another
- Regain self-esteem
- Build self-confidence
-

Activities, led by trained CAH staff and interns, include unique, therapeutic approaches to art; expressive movement; yoga; music; horseback riding; outdoor activities; Hawaiian cultural activities; community service; and team-building.

Eligibility: Sexually abused children



Palama Settlement “Pakolea Program”

810 North Vineyard Honolulu, Hawaii 96817

Phone Number: (808) 845- 3945

Area Served: Kalihi-Palama

Email: info@palamasettlement.org

Website: <http://www.palamasettlement.org/>

Service: To help prepare the participants for a responsible, gratifying, successful and productive adulthood. Helping youth, ages 7-17, through sports, academics (learning center/academic study time), and teaching of socialization skills, challenging previous notions of individual limitations, and assisting youth with the setting of short and long-term goals. Sports/athletic activities include football, basketball, cheerleading, volleyball, hiking, and any other sports/recreational opportunity that neighborhood youth show an interest in.

Fees: Sliding scale fee

Eligibility: youth ages 7-17



P.O. Box 241018 Honolulu, HI 96824

Phone Number: 808-306-8008

Email: winnerscamp@gmail.com

Services: A one week retreat designed to enhance teenagers' academic performance and social proficiency, giving them tools to make positive choices. Provided periodically throughout the year on Oahu, Kamehame Ridge (between Hawaii Kai & Waimanalo).

Teen Tuition includes: All meals (breakfasts, lunches, dinners, and snacks, dorm-style lodging. 110 hours of instruction and supervises activities for 7-day camps, 75+ hours for 5-day camps. Course materials, student manual and supplies

Parent integration seminar

Winner's camp T-shirt & camp photo

Out of state applicants: Your tuition also includes airport transfers, housing and supervision one day prior to and after camp to accommodate flight schedules.

Eligibility: Teens aged 12-15, drug-free and non-violent

Referred by: Self (For foster child, inform child's Social Worker)

Fee: \$780.00 for Spring Break Program (5 Days) \$980.00 for Summer Programs (7 Days)

Area served: Statewide (located on Oahu)

Website: www.winnerscamp.com



Metropolitan office: 1441 Pali Highway, Honolulu, HI, 96813

Phone Number: (808) 531-YMCA (9622)

Email: info@YMCAhonolulu.org

Services:

Ho'okupa'a Teen Leadership Program:

Ho'okupa'a provides a variety of on and off site activities for youths in grades 6-12. The focus of this program is youth development, healthy living, and social responsibility. Through the Healthy Together curriculum, the Ho'okupa'a members will learn a variety of healthy physical activities, tips on eating healthier, ways to relieve stress, opportunities within their community to provide community service, as well as positive social interaction and a safe environment.

STRIVE:

STRIVE was launched in summer of 2010 and it was a hit! STRIVE is a summer program that combines our nationally recognized Healthy Together program with leadership opportunities and lots of fun events such as excursions, outings and functions with teens from other Y branches. Healthy Together mini workshops such as Staying Active and Healthy Food Choices integrate hands on, real life experiences in fitness, cooking, health and wellness goal setting and project planning. Participants will be informed of pre-program mandatory training that will prepare them for the leadership roles they will engage in.

Eligibility: youth in grades 6-12

Area served: Statewide

Website: <http://www.ymcahonolulu.org/>

